

Birding The Arizona Trail

Table 1

Passage	Name	# of species
1	Huachuca Mountains	171
2	Canelo Hills East	77
3	Canelo Hills West	238
4	Temporal Gulch	257
5	Santa Rita Mountains	173
6	Las Colinas	44
7	Las Cienegas	126
8	Rincon Valley	137
9	Rincon Mountains	12
10	Redington Pass	173
11	Santa Catalina Mountains	116
12	Oracle Ridge	137
13	Oracle	35
14	Black Hills	No reports
15	Tortilla Mountains	7
16	Gila River Canyons	39
17	Alamo Canyon	73
18	Reavis Canyon	68
19	Superstition Wilderness	112
20	Four Peaks	27
21	Pine Mountain	141
22	Saddle Mountain	155
23	Mazatzal Divide	101
24	Red Hills	No reports
25	Whiterock Mesa	No reports
26	Hardscrabble	13
27	Highline	66
28	Blue Ridge	85
29	Happy Jack	61
30	Mormon Lake	237
31	Walnut Canyon	213
32	Elden Mountain	201
33	Flagstaff	216
34	San Francisco Peaks	157
35	Babbitt Ranch	18
36	Coconino Rim	92
37	Grand Canyon - South Rim	181
38	Grand Canyon - Inner Gorge	195
39	Grand Canyon - North Rim	166
40	Kaibab Plateau South	99
41	Kaibab Plateau Central	67
42	Kaibab Plateau North	56
43	Buckskin Mountain	28

Table 2

IBA	Miles
Anderson Mesa	13.5
Boyce Thompson Arboretum/Arnett - Queen Creeks	3.2
Grand Canyon - Lipan and Yaki Points	47.3
Huachuca Mountains	26.6
Mogollon Rim Snow Melt Draws	2.5
Patagonia Mountains	0.1
Santa Rita Mountains	48.7

Table 3

- 1

Agua Fria NM Riparian Corridors IBA
- 2

Anderson Mesa IBA
- 3

Appleton-Whittell Research Ranch (NAS) IBA
- 4

Arivaca Cienaga/Arivaca Creek IBA
- 5

Atascosa Highlands IBA
- 6

Aubrey Valley and Cliffs IBA
- 7

Bill Williams River NWR IBA
- 8

Blue and San Francisco Rivers Complex IBA
- 9

Boyce Thompson Arboretum/Arnett-Queen Creeks IBA
- 10

Camp Verde IBA
- 11

Cave Creek Ecosystem IBA
- 12

Chiricahua Mountians IBA
- 13

Cibola NWR IBA
- 14

Gilbert Riparian Preserves IBA
- 15

Grand Canyon National Park IBA
- 16

Havas National Wildlife Refuge IBA
- 17

Huachuca Mountains IBA
- 18

Imperial National Wildlife Refuge IBA
- 19

Imperial Reservoir IBA
- 20

Joshua Tree IBA (Chicken Springs BLM Allotment)
- 21

Las Cienegas NCA IBA
- 22

Lower Colorado River Gadsden Riparian Area IBA
- 23

Lower Gila River Quigley Wildlife Area IBA
- 24

Lower Oak Creek IBA
- 25

Lower Salt and Gila Rivers Ecosystem IBA
- 26

Lower San Pedro River IBA
- 27

Marble Canyon/Vermilion Cliffs IBA
- 28

Mittry Lake State Wildlife Area IBA
- 29

Mogollon Rim Snow Melt Draws IBA
- 30

Patagonia Mountains IBA
- 31

Patagonia Sonoita Creek TNC Preserve IBA
- 32

Pinaleno Mountains IBA
- 33

Salt-Verde Ecosystem IBA
- 34

San Pedro Riparian National Conservation Area IBA
- 35

San Rafael Grasslands IBA
- 36

Santa Rita Mountains IBA
- 37

Sonoita Creek SNA/Patagonia Lake IBA
- 38

Sonoran Desert Borderlands IBA
- 39

Tanque Verde Wash/Sabino Canyon IBA
- 40

Tucson Mountains IBA
- 41

Tucson Sky Islands and Sonoran Uplands IBA
- 42

Tuzigoot IBA
- 43

Upper Little Colorado River Watershed IBA
- 44

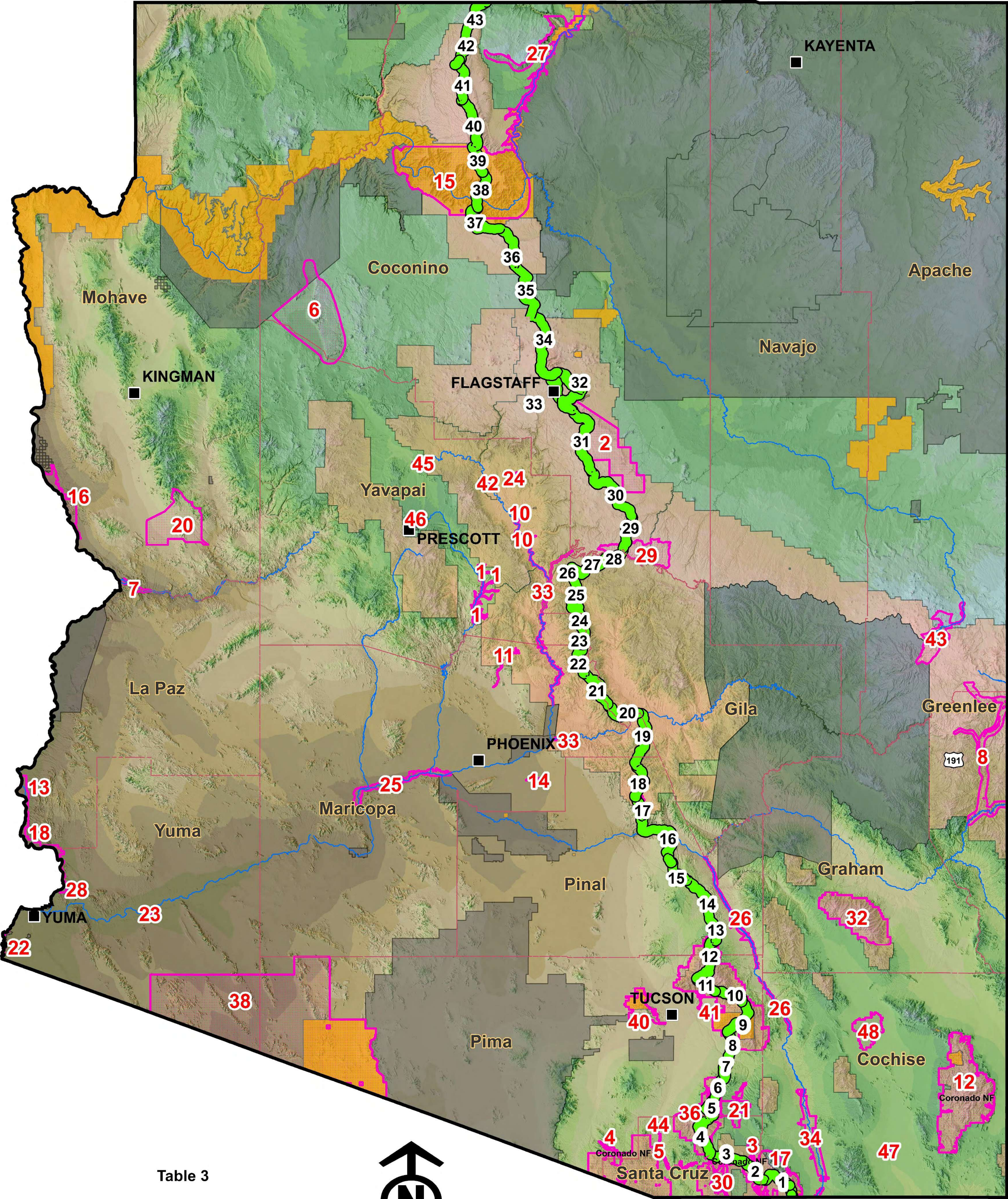
Upper Santa Cruz River IBA
- 45

Upper Verde River Wildlife Area IBA
- 46

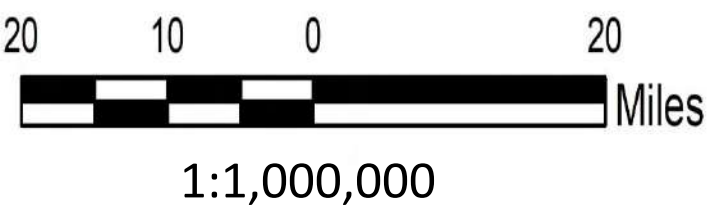
Watson/Willow Ecosystem IBA
- 47

Whitewater Draw State Wildlife Area IBA
- 48

Willcox Playa/Cochise Lakes IBA



- Arizona Trail Passages
- County
- Important Bird Area (IBA)
- National Park/Monument
- National Forest
- Tribal



eBird is an online database where anyone can report bird sightings for a particular location. More than 100 million sightlings are submitted each year. The data are freely available to everyone and can be used for scientific research or to simply decide where to spend a day birding. For this project, eBird data were extracted along the entire length of the Arizona Trail. To more accurately represent the species found along the trail, a one-mile buffer was created on either side of the Trail. Three hundred seventy-three species have been reported along the Trail. This is 67% of the total species found in Arizona. Table 1 shows the number of species that have been reported along each Arizona Trail Passage.

eBird. 2019. eBird: An online database of bird distribution and abundance [web application]. eBird, Ithaca, New York. Available: <http://www.ebird.org>. (Accessed: Date [August, 2019]).

The Arizona Important Bird Area (IBA) program (aziba.org) identifies areas across the State that provide critical habitat for bird species of the greatest conservation concern. There are currently forty-eight designated IBAs. Table 2 shows IBAs that are intersected by the Trail. A complete list of all 48 IBAs is shown in Table 3.

