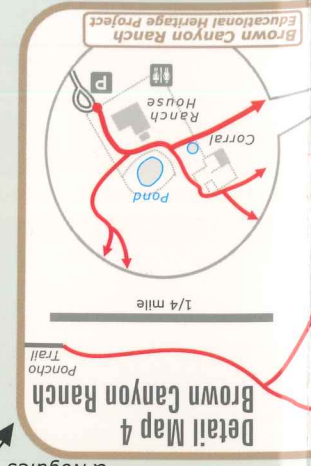
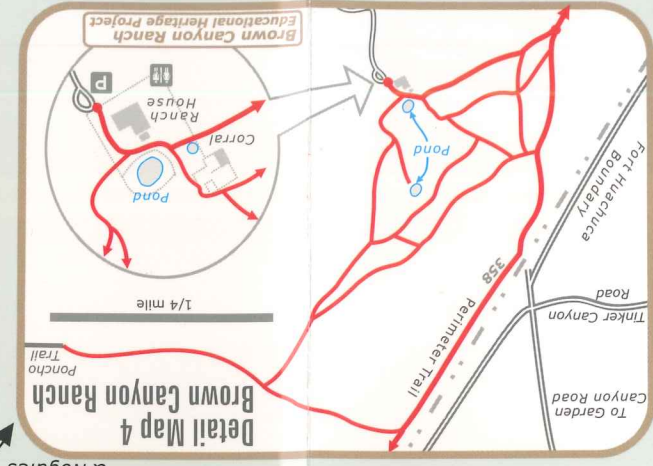


**TRAVEL CAUTION**  
SMUGGLING AND ILLEGAL IMMIGRATION MAY BE ENCOUNTERED IN THIS AREA

- Forest Service trails are multi-use. Bicycles are not allowed on trails in Wilderness Area. Maximum 20' vehicle/12' trailer length on Carr Canyon Road.
- National Park Service trails are foot-use only; no horses or bicycles, except horses are allowed on the Crest Trail, starting from Montezuma Pass. Dogs must be leashed. Maximum 24' vehicle length on Montezuma Canyon Road.
- Access to Fort Huachuca requires a Driver's License, automobile registration and proof of insurance.

Fort Huachuca ..... (520) 533-7093  
 Coronado National Memorial ..... (520) 366-5515  
 Parker Canyon Lake Outfitters ..... (520) 455-5847  
 Ramsey Canyon Preserve ..... (520) 378-2785  
 US Border Patrol ..... (800) 232-5378

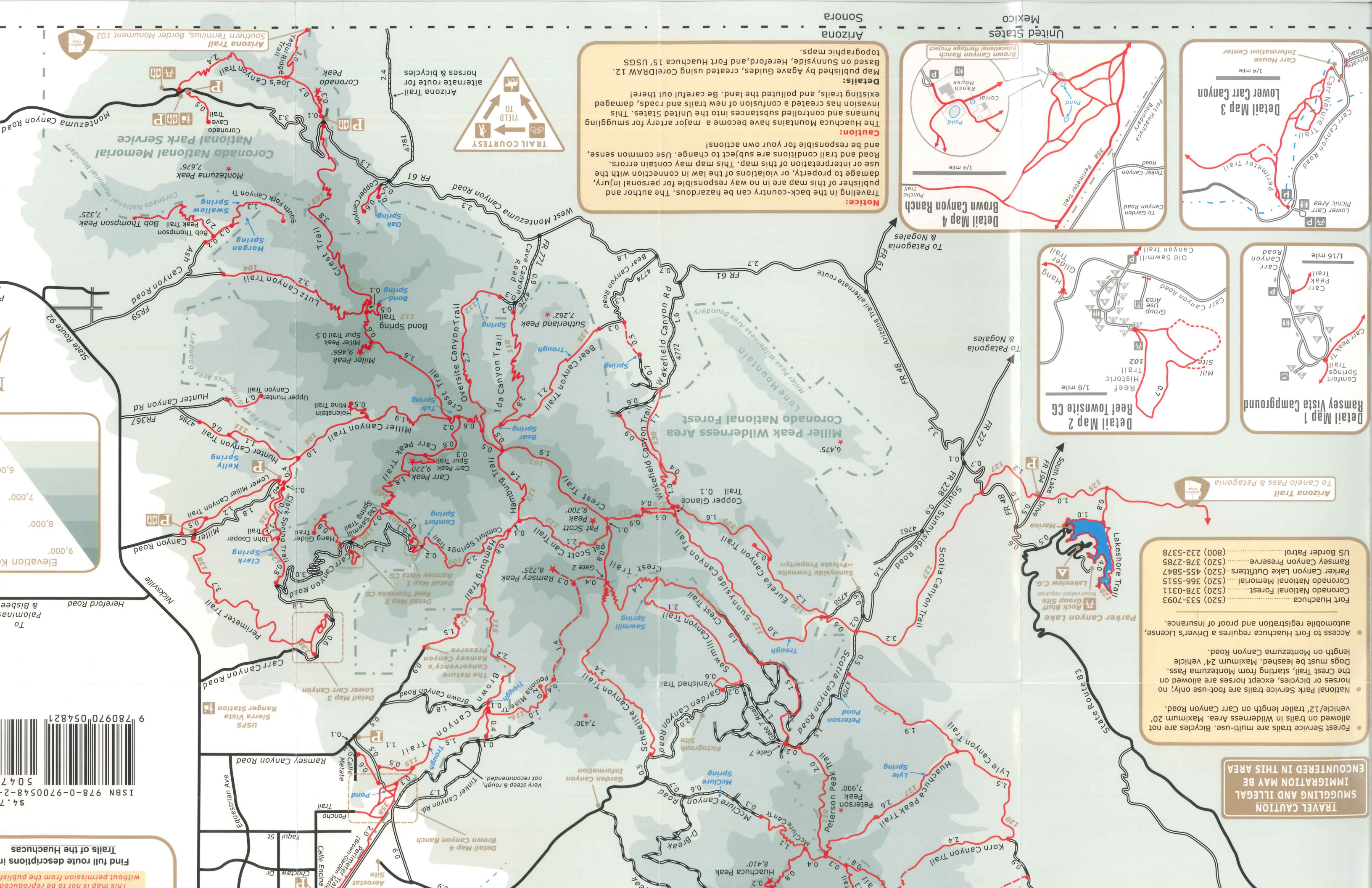
Arizona Trail  
 To Canelo Pass & Patagonia



**Notice:** Traveling in the back-country can be hazardous. The author and publisher of this map are in no way responsible for personal injury, damage to property, or violations of the law in connection with the use or interpretation of this map. This map may contain errors. Road and trail conditions are subject to change. Use common sense, and be responsible for your own actions!

**Caution:** The Huachuca Mountains have become a major artery for smuggling humans and controlled substances into the United States. This invasion has created a confusion of new trails and roads, damaged existing trails, and polluted the land. Be careful out there!

**Details:** Map published by Agave Guides, created using CoreDRAW 12. Based on Sunnyside, Hereford, and Fort Huachuca 15' USGS topographic maps.



Find full route descriptions in  
 Trails of the Huachuclas  
 ISBN 978-0-9700548-2-2  
 \$4.75

