

Gilbert Riparian Preserves

IBA web pages	<ul style="list-style-type: none"> http://www.audubon.org/important-bird-areas/gilbert-riparian-preserves-water-ranch-and-neely-wetlands http://aziba.org/?page_id=353
Priority	State
Qualifying Criteria	<p>State: Shorebirds – site supports significant concentration of shorebirds (<100 at one time) (<i>Killdeer, American Avocet, Black-necked Stilt, Greater Yellowlegs, Lesser Yellowlegs, Solitary Sandpiper, Spotted Sandpiper, Western Sandpiper, Least Sandpiper, Short-billed Dowitcher, Long-billed Dowitcher, Stilt Sandpiper, Wilson’s Snipe, Wilson’s Phalarope</i>)</p> <p>Education - site supports educational programs with significant content focused on avian ecology and riparian</p>
IBA Polygon Center Point (Latitude, Longitude)	<p>Gilbert Water Ranch: 33.36° N, 111.73° W Neely Ponds: 33.35° N 111.80° W</p>
Size	<p>Gilbert Water Ranch: 110 acres Neely Ponds: 72 acres</p>
County	Maricopa
Local Communities	Gilbert
Description	<p>The Gilbert Riparian Preserves IBA contains two wetland complexes that are part of Gilbert’s water treatment facility: the Gilbert Water Ranch (open to the public) and Neely Ponds (not open to the public). Both consist of riparian, upland, and open water habitats. The upland habitat is native desert scrub and sedge and grasslands dominate the dry basins. This IBA is a migration and over-wintering hotspot for shorebirds in Arizona and is a favorite easy access birding destination for Central Arizona residents. For more information, visit https://www.gilbertaz.gov/departments/parks-and-recreation/riparian-preserve-at-water-ranch/about-us.</p>
Mission/Goals	To be recognized as a premiere education and recreation resource in Arizona while preserving valuable natural resources, supporting creation and conservation of scarce riparian areas, and protecting needed habitat for wildlife.
Current Habitat Conservation, Planning, and Management Activities	While the primary function of these sites is water treatment for the Gilbert, the Water Ranch portion of this IBA is managed for wildlife and wildlife viewing opportunities.
Land Cover Type ¹ (%) and Associated Priority ² Birds	<p>57.89 Open Water and Marsh (<i>Killdeer, American Avocet, Black-necked Stilt, Greater Yellowlegs, Lesser Yellowlegs, Solitary Sandpiper, Spotted Sandpiper, Western Sandpiper, Least Sandpiper, Short-billed Dowitcher, Long-billed Dowitcher, Stilt Sandpiper, Wilson’s Snipe, Wilson’s Phalarope, Peregrine Falcon</i>)</p> <p>31.58 Riparian (<i>Yellow Warbler, Gila Woodpecker, Abert’s Towhee</i>)</p>

¹Southwest Regional Gap Analysis adjusted using data from <https://www.gilbertaz.gov>

²AGFD SGCN and IBA Qualifying Species

	10.53 Sonoran Desertscrub: Lower Colorado River (<i>Western Burrowing Owl</i>)
Related Habitat Accounts*	Lowland Riparian Sonoran Desert
Biological Description	<p>These wetlands are positioned within a landscape of widespread urban, agriculture, and desert habitats in the mid-section of the state, and thusly provide an important oasis for shorebirds in migration. The wetland complexes support significant numbers of shorebirds who find ideal foraging habitat in the settling basins of each complex. In addition, the wetlands have ponds of varying water levels that provide roosting and foraging habitat for many waterbird and waterfowl species. Shorebird diversity is high with 14 species using the wetland basins over the two sites. The species in highest concentrations during the migration and winter periods are Long-billed Dowitcher, Least Sandpiper, and Black-necked Stilt. American Avocet join these species in lower numbers primarily during the spring migration period. Peak numbers of all shorebird species (on a single day) over the two wetland complexes are 1100 shorebirds during spring and fall migration periods, and nearly 800 shorebirds during winter. Peregrine Falcon are regularly present during the migration period. Also present are Burrowing Owl which nest in artificial burrows installed for them at the Water Ranch site and American Kestrel and Loggerhead Shrike which may nest on site.</p>
Focal Bird Species	<p><u>AGFD Species of Greatest Conservation Need</u></p> <p><u>Tier 1:</u> Peregrine Falcon</p> <p><u>Tier 2:</u> Costa’s Hummingbird, Gila Woodpecker, Loggerhead Shrike, Verdin, Cactus Wren, Abert’s Towhee, Yellow Warbler, Brewer’s Blackbird, Red-winged Blackbird, Bullock’s Oriole, Hooded Oriole</p> <p><u>Federal Threatened or Endangered Species</u></p> <p>None</p> <p><u>USFWS Birds of Conservation Concern</u></p> <p>National – Peregrine Falcon, Solitary Sandpiper, Lesser Yellowlegs, Short-billed Dowitcher, Loggerhead Shrike</p> <p>USFWS Region – Peregrine Falcon, Solitary Sandpiper, Lesser Yellowlegs, Short-billed Dowitcher, Western Burrowing Owl, Loggerhead Shrike, Yellow Warbler</p>
NABCI Bird Conservation	33: Sonoran and Mohave Deserts

Region	
Ownership	Town of Gilbert
Conservation Land Status**	City park/preserve
Human Population Density	Urban
Legislative District(s)	Arizona Congressional District 5 and State Legislative District 14
NRCS Major Land Resource Area	52: Sonoran Basin and Range
Visitation, main access, and permits needed	For information about visiting this IBA, visit: https://www.gilbertaz.gov/departments/parks-and-recreation/parks/riparian-preserve-at-water-ranch

*References available written narratives (located on the SJV website) for general habitat types occurring within the IBA.

**Identifies whether the IBA or portions of the IBA have a special land management designation such as: wilderness, primitive area, wildlife area, refuge, park, monument, designated conservation area, conservation easement, or other similar designation

IBA Activities:

Issue or Activity	Priority	Description	Actions
AZ IBA Surveys	H	Annual surveys of wintering and spring migrant waterfowl and shorebirds	Encourage eBird entries and shift data collection to eBird platform
IBA Signage	M	Install signs identifying the site as an IBA	Needs updated signs
IBA Dedication	M	A formal recognition event	Pending

Partners:

Name	Role(s)	Contact Information	Actions
Town of Gilbert Parks and Recreation Department	Land Manager	https://www.gilbertaz.gov/departments/parks-and-recreation/parks-facility-and-sport-field-rentals/parks-information/parks/riparian-preserve-at-water-ranch	Management of Feral Cats, maintenance of riparian habitats, Education and Outreach
Desert Rivers Audubon Society	Steward		Bird walks, advocacy for the Preserve

Conservation Targets:

These are species, communities, or ecological systems that represent and encompass the full array of biodiversity found in this IBA.

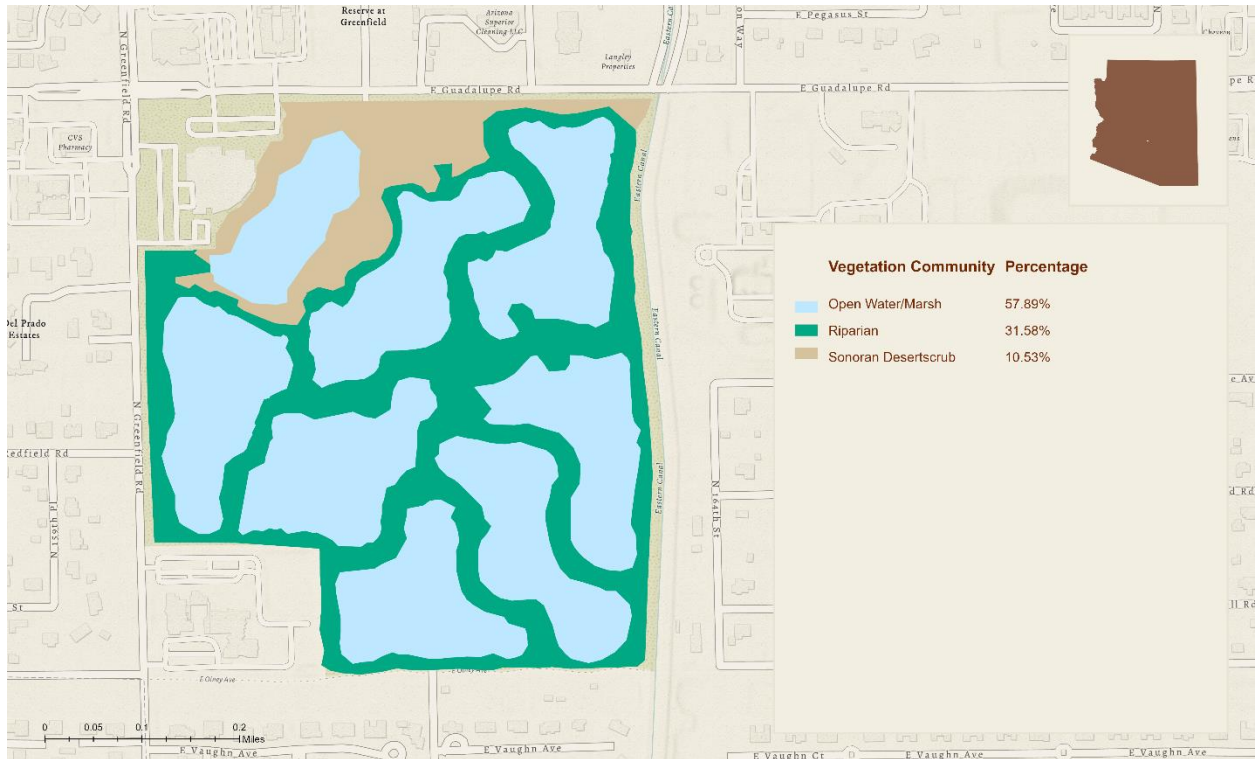
Conservation Target	Current Condition
Shorebirds (Migration stop over)	Good
Waterfowl (Winter and Migration)	Good
Riparian Birds	Good

Conservation Challenges:

Conservation challenges are primarily human activities that immediately affect what we are trying to conserve. Through a Miradi process, it was found that pose the greatest threats to birds within this IBA.

Challenges	Shorebirds	Riparian Birds	Waterfowl	Summary Rating
Water Management	Low	Low	Low	Low
Feral Cats	Medium	Low	Low	Medium
Disturbance	Low	Low	Low	Low
Summary Ratings:	Medium	Low	Low	Low

Gilbert Riparian Preserves (Water Ranch and Neely wetlands)	Severity (1-3)	Scope (1-3)	Permanence (2-4)
Threats on National Database			
Disturbance to birds	1	2	1
Invasive species	1	3	2



Gilbert Riparian Preserves IBA

